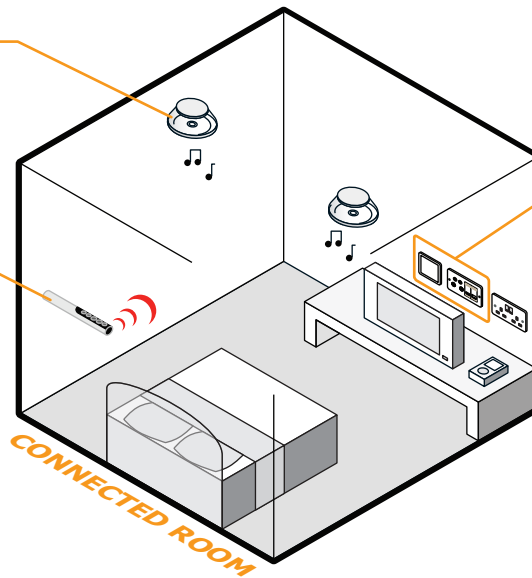


Overview

The Multi-room audio system is tailored to suit your property and consists of a number of in-ceiling speakers connected to the multi-room audio hub within the **DP**. The multi-room audio speakers are controlled using a simple infra-red remote control. Each pair can play music from main audio source such as a hi-fi system, located in the Main Living Space as standard. Additionally each pair can connect to a local audio source, such as an MP3 player, plugged into the Local Audio Socket (if fitted).

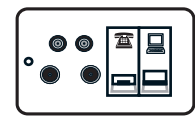
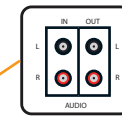
In-ceiling speakers can play the Main Audio Source or a locally plugged in Local Audio Source.

Simple remote control switches Audio Source between MAIN and LOCAL audio sources.



Local Audio Socket

Room Media Socket



The Local Audio Socket is typically located next to the Room Media Socket.

Connecting your Main Audio Source

Each pair of multi-room audio in-ceiling speakers can listen to a remote Main Audio Source which is typically located in the Main Living Space. This could be a CD player, mini Hi-fi system, radio, MP3 player or even an audio output from a Media Centre computer. A stereo signal is required and this must be connected to the **DP** using the Main Media Socket and a Multi-room Audio Dongle (the Multi-room Audio Dongle will of been provided by your installer).

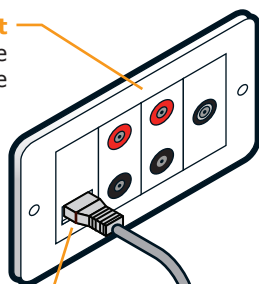
Main Media Socket
Typically located in the Main Living Space

Main Audio Source

You can connect any piece of equipment which provides a stereo audio output as a Main Audio Source (normally a fixed line level output of your main stereo system or MP3 player)

Multi-room Audio Module
Plug the Multi-room Audio Dongle into the Main Media Socket

Multi-room Audio Dongle
Connect your audio source to the stereo audio input on the Multi-room Audio Dongle



Connecting your Local Audio Source

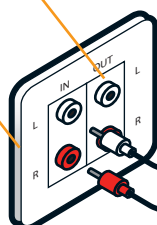
Each pair of multi-room audio in-ceiling speakers can connect to a remote Local Audio Source (if Local Audio Socket is installed). This could be a CD player, mini Hi-fi system, radio, MP3 player or even an audio output from a computer.

Local Audio Output
(use if you need a fixed level output looped from the Local Audio Input, for a cassette deck for example)

Local Audio Input

Connect a local audio source into the 'IN' stereo connections using a stereo lead.

Local Audio Socket
Used to play a Local Audio Source using the local in-ceiling speakers. Some rooms may not have a Local Audio Socket.

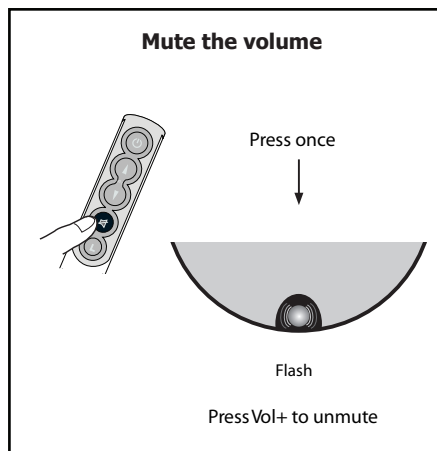
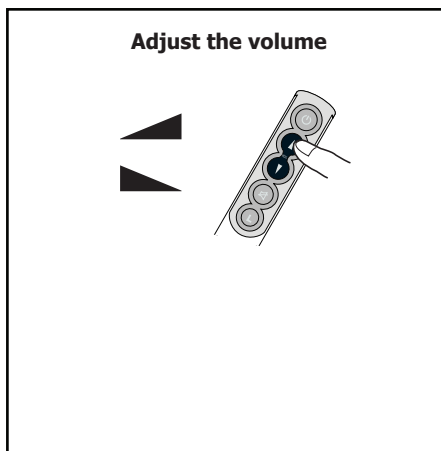
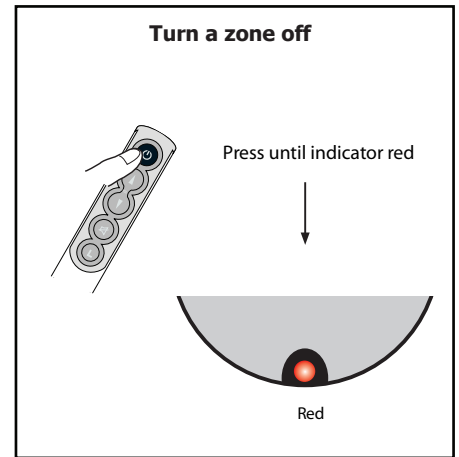
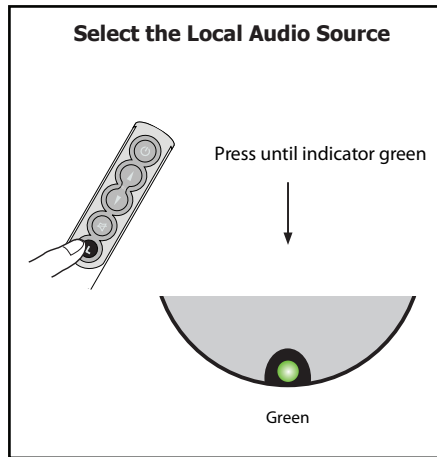
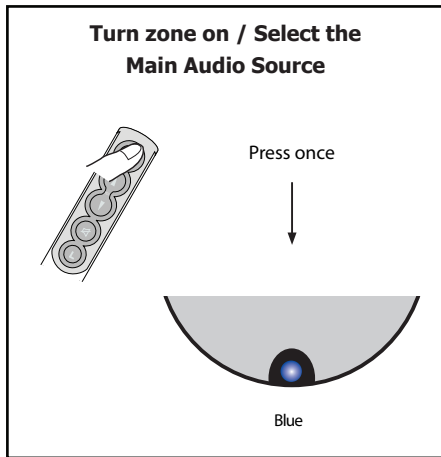


Local Audio Source

You can connect any audio equipment which provides a stereo audio output as a Local Audio Source

Using the Remote Control

Using the remote control you can adjust the volume of the speakers, mute, power on/off and switch between the Main Audio Source and Local Audio Source.



If your speakers are not responding try changing the battery in remote control.



Only one speaker of each pair has an Infra-red window on it, it is identified by the LED light.

Using Infra-red Pass-through

Each Infra-red enabled pair of speakers has the ability to pick up infra-red commands and route them back to the system via the Multi-Room Audio Dongle in the Main Living Space so that a hi-fi system or TV can be controlled from any zone. This can also be used to control a digital TV receiver for example, allowing you to change channel from another room. To do this Window Emitters (supplied with the Dongle) must be fitted to the Multi-Room Audio Dongle and stuck onto the infra-red receiver window of each piece of equipment.

